



# ARATRON II ELECTRONICS

ESD PRODUCTS—COMPONENT DISTRIBUTION

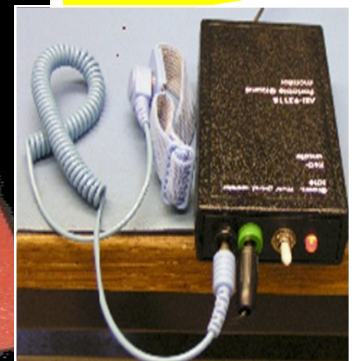
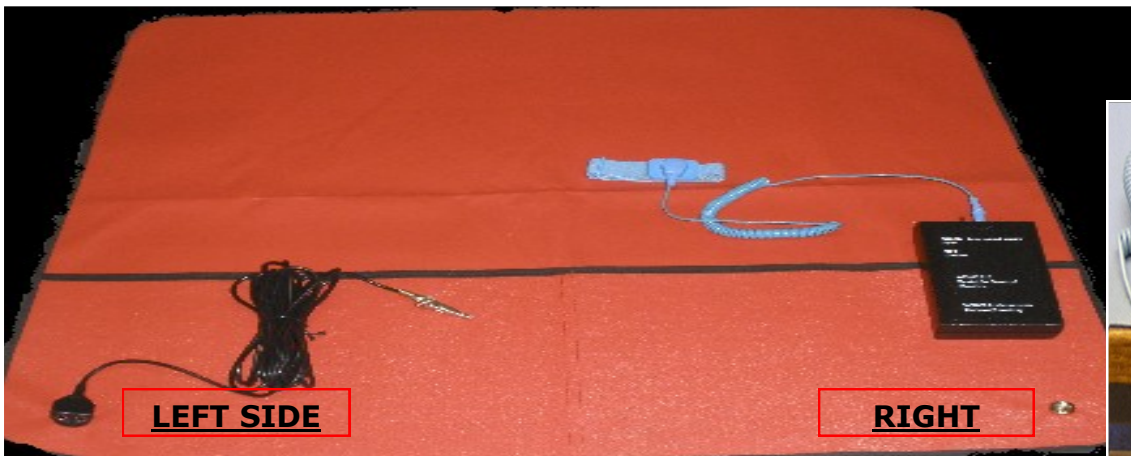
## FIELD KIT—PORTABLE WORK AREA & MONITOR

### *INSTALLATION INSTRUCTIONS*

UNSURPASSED  
QUALITY  
UNRIVATED  
SERVICE  
UNMATCHED  
REPUTATION

- A) **Unfold-Red Mat & lay on your work area**
- B) **Use ground cable on the left side. Snap snake head 3/8 mm, snap to mat and the other end must be grounded to utility ground**
- C) **Right side use ground cable from 9211B monitor and snap to 3/8 snap (right side).**
- D) **Plug wrist strap into monitor 9211B.**
- E) **AEI 9211B is a battery operated ESD Monitor. Off and on switch will turn it on you will see red led blinking. Connect -wrist strap to black connector. Your work area is know ESD SAFE**

**BEST PRICES**



**Member of the ESD  
Association**

21981 ANNETTE AVE, LAKE  
FOREST, CALIFORNIA 92630

PHONE: (949) 837-9138  
FAX: (949) 837-6220

#### PROPERTIES

**Material:** Vinyl  
dissipative

**Pocket:** Two

**Thickness:** 0.18mil

**Colors:** Red

**Charge decay:** .01sec

#### AND

**Size:** 24" \* 24"

**Meets Standards:**  
S20.20, Mil-STD-1686  
& HDBK-263

**Wrist Strap:** One  
Adjustable Band

#### SPECIFICATIONS

**Strap:** 8' & 10' light  
weight coil & ground

**Strap:** One 3/8' m-  
snap

**WWW.ARATRON.COM - ARAGONARATRON@AOL.COM**  
**PH. 949.837.9138 FX. 949.837.6220**